

Earthquake!

The Great Kanto Earthquake, 1923

The Bruces in Japan

- Sydney Bruce, my grandfather, spent much of the period between Dec 1910 and Apr 1924 living and working in Japan.
- Wife Rose Mary and children came for three extended visits during that time.
- These images show something of the foreigner's 'settlement' they lived in – highly social, privileged and removed from the world of their Japanese neighbours



The Great Kanto Earthquake, 1923



The Great Kanto Earthquake, 1923



The Great Kanto Earthquake, 1923



The Great Kanto Earthquake, 1923



The Great Kantō Earthquake, 1923



The Great Kantō Earthquake, 1923



The Great Kanto Earthquake, 1923



The Great Kantō Earthquake, 1923



The Great Kantō Earthquake, 1923



The Great Kanto Earthquake, 1923



The Great Kantō Earthquake, 1923



The Great Kantō Earthquake, 1923



The Great Kantō Earthquake, 1923



The Great Kantō Earthquake, 1923



The Great Kantō Earthquake, 1923



The Great Kanto Earthquake, 1923



The Great Kanto Earthquake, 1923



The Great Kantō Earthquake, 1923



The Great Kanto Earthquake, 1923



The Great Kantō Earthquake, 1923



The Great Kanto Earthquake, 1923



The Great Kantō Earthquake, 1923



The Great Kanto Earthquake, 1923



The Great Kantō Earthquake, 1923



The Great Kantō Earthquake, 1923



The Great Kantō Earthquake, 1923



The Great Kanto Earthquake, 1923



The Great Kantō Earthquake, 1923



The Great Kanto Earthquake, 1923



The Great Kanto Earthquake, 1923



The Great Kantō Earthquake, 1923



The Great Kanto Earthquake, 1923



The Great Kantō Earthquake, 1923



The Great Kantō Earthquake, 1923



The Great Kantō Earthquake, 1923



The Great Kanto Earthquake, 1923



The Great Kantō Earthquake, 1923



The Great Kanto Earthquake, 1923



The Great Kantō Earthquake, 1923



The Great Kantō Earthquake, 1923



The Great Kanto Earthquake, 1923



The Great Kantō Earthquake, 1923



The Great Kantō Earthquake, 1923



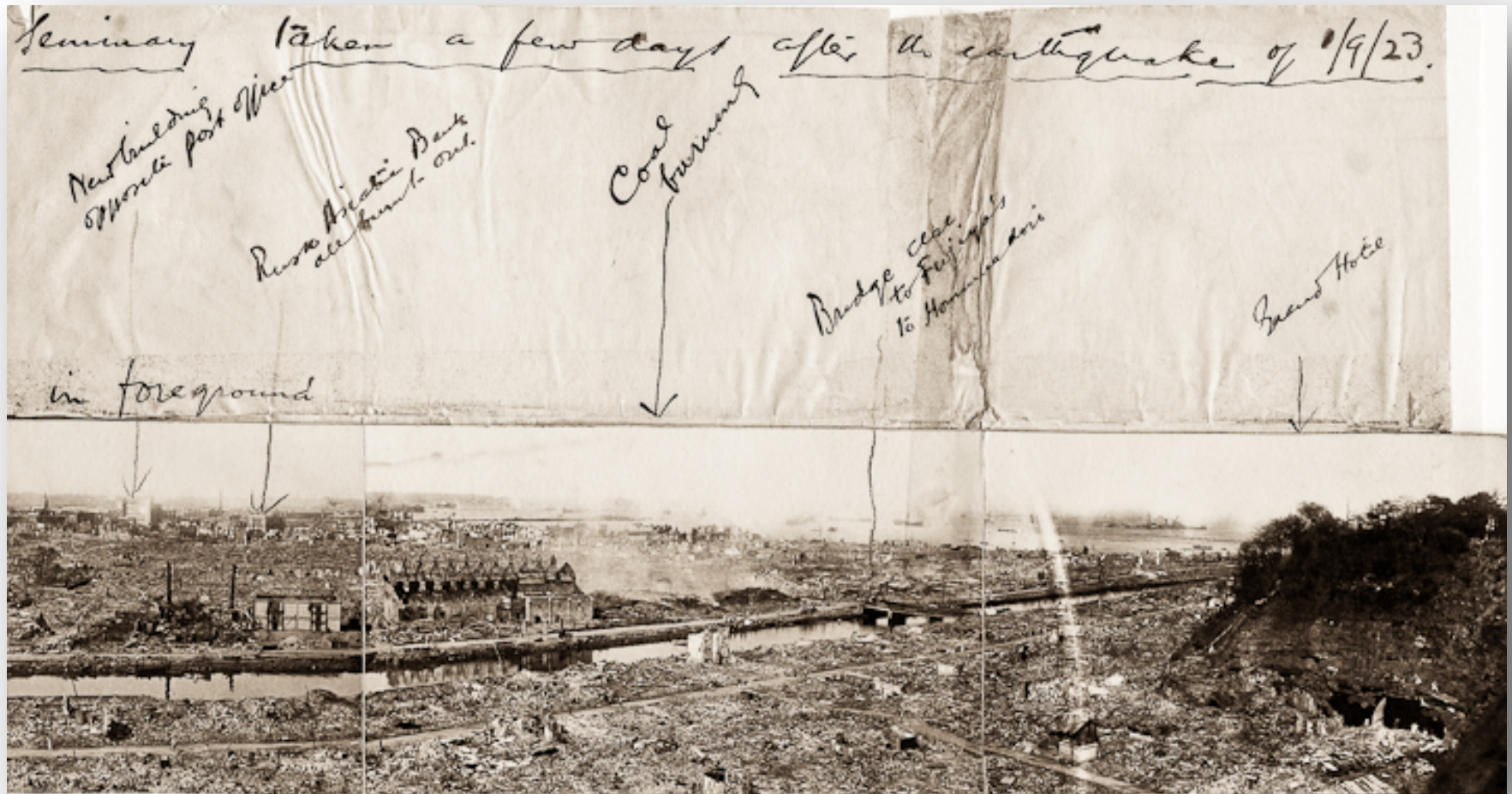
The Great Kantō Earthquake, 1923



The Great Kantō Earthquake, 1923



The Great Kantō Earthquake, 1923



The Great Kanto Earthquake, 1923



The Great Kantō Earthquake, 1923



The Great Kanto Earthquake, 1923



The Great Kanto Earthquake, 1923



The Great Kantō Earthquake, 1923



TOKYO

浅草方面焼跡其二(47)

The Great Kantō Earthquake, 1923



The Great Kanto Earthquake, 1923



The Great Kantō Earthquake, 1923



The Great Kantō Earthquake, 1923



The Great Kanto Earthquake, 1923



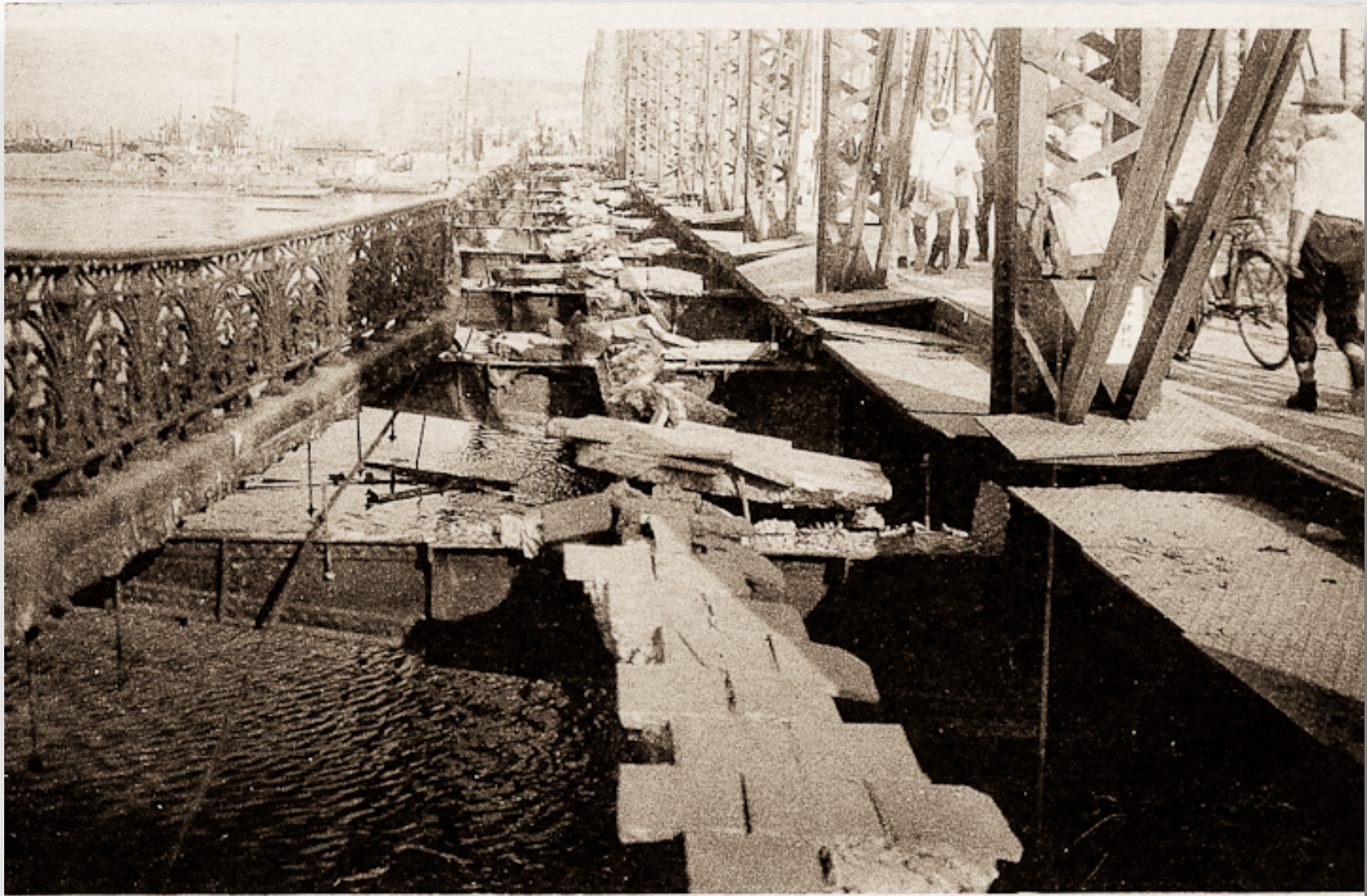
The Great Kantō Earthquake, 1923



The Great Kanto Earthquake, 1923



The Great Kantō Earthquake, 1923



狀慘ノ壞破橋國兩 (災震東關日一月九年二十正六)

The Great Kantō Earthquake, 1923



The Great Kanto Earthquake, 1923



The Great Kanto Earthquake, 1923



The Great Kanto Earthquake, 1923

46 Harima nochi
Kobe.

1. 10. 23.

Darling

Just had your letter dated the 23rd August and a gentle reminder that I owe you more than one. Have tried to write you once or twice but each time had to give it up - the earthquake seems to have knocked all the stuffing out of me. What a bit of luck you left here in July!! Not only prevented you from a bad shock to the nerves (although I expect you had a bad time waiting for news of us) but you saved all your belongings - which nobody else in Yokohama did - the whole city & bluff are as flat as a pancake - dreadful sight & it is a wonder that so many of us are alive to tell the tale - unfortunatly about 300 foreigners lost their lives quite a number among them our own friends - poor old Watson & Patterson, Tail, Tom Moberg - Dr Reidhead & Wheeler, Dr Ishiura, all gone -

I was on the train at the time - close to Omori station - with Frank, Chapman & Call - travelling at about 40 miles

The Great Kanto Earthquake, 1923



Sydney Bruce views the ruins of 203 Bluff Rd S of Yokohama beyond.



The Great Kantō Earthquake, 1923



The Great Kanto Earthquake, 1923



The Great Kanto Earthquake, 1923

A New Earth Media Production

peter@newearthvillage.com

Copyright: Peter Bruce 2013