

Life in Japan

The Bruces in Japan

- Sydney Bruce, my grandfather, spent much of the period between Dec 1910 and Apr 1924 living and working in Japan.
- Wife Rose Mary and children came for three extended visits during that time.
- These images show something of the foreigner's 'settlement' they lived in – highly social, privileged and removed from the world of their Japanese neighbours



Rose Mary Caldwell Bruce

No. 1341.

PASSPORT.

By His Britannic Majesty's
Consul-General
at
Yokohama, Japan

These are to request and require in the
Name of His Majesty all those whom it may
concern to allow

Rose Mary Bruce,

to pass freely without let or hindrance, and to
afford her all assistance and protection of
which she may stand in need.

Given at British Consulate, Peking
the 25th day of November 1916



[Signature]
Consul-General

DESCRIPTION OF BEARER.

Age 44 yrs. Profession _____
Place & date of birth Hongkong, Feb. 29th 1872
Maiden name of widow or } Caldwell
married woman travelling }
singly
Height 5 feet — inches
Forehead medium Eyes Brown
Nose straight Mouth small
Chin medium Colour of Hair dark brown
Complexion Dark Face oval
Any special peculiarities _____
Nationalities British born
subject, wife of Sydney
Bruce, a British born subject.

This passport is valid for two years only
from the date of its issue. It may be renewed for
four further periods of two years each after
which a new passport will be required.



RENEWALS.

This passport is hereby renewed
Valid until 25th November 1920.
[Signature]
Consul-General

PHOTOGRAPH OF BEARER.



SIGNATURE OF BEARER.

Life in Japan



Back: Maurice, Frank, Sydney, Geoffrey; Middle: Vi, Rose Mary; Front: Irene



Life in Japan



Life in Japan



Frank (centre) executing his infamous setup shots



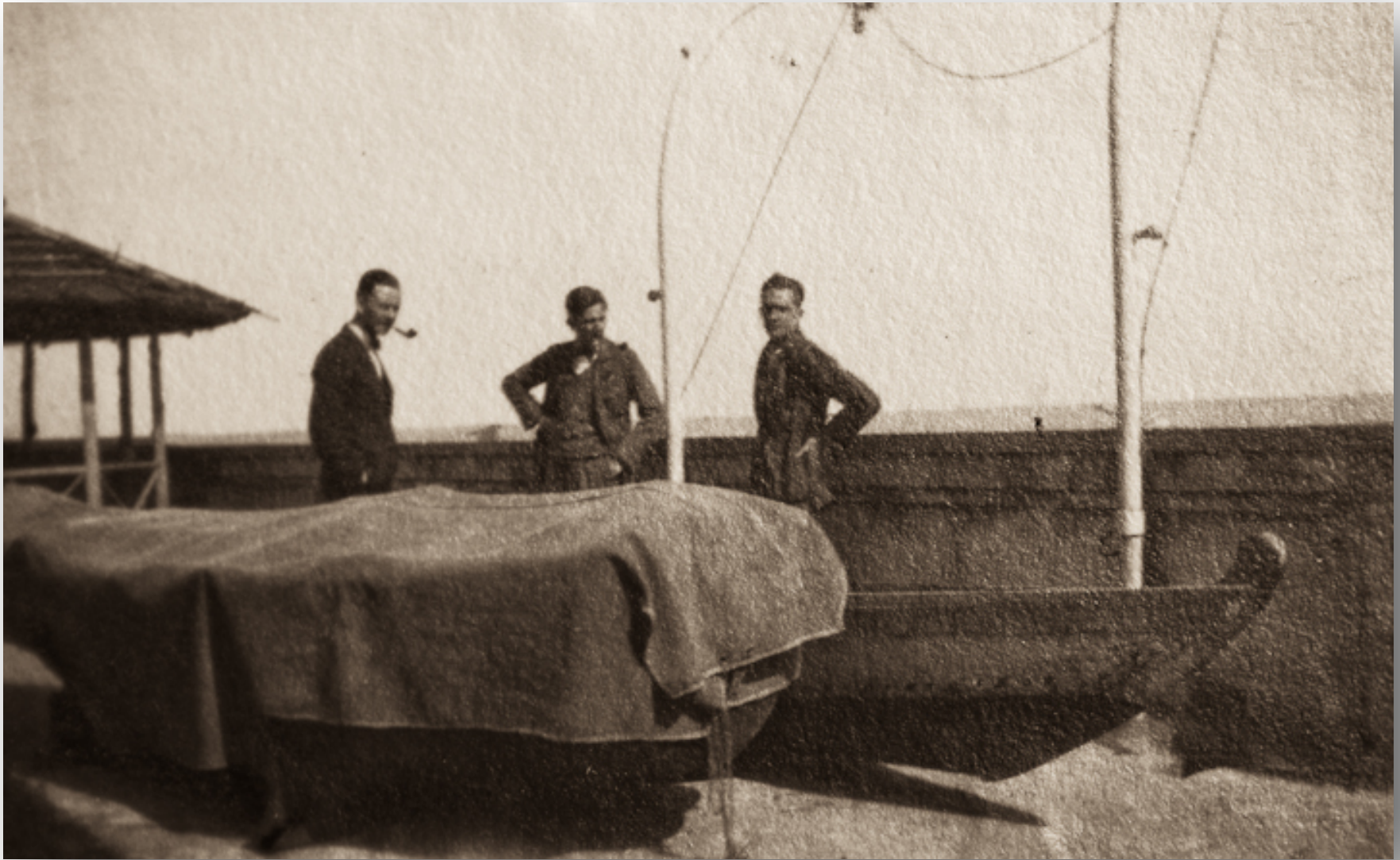
Life in Japan



Life in Japan



Life in Japan



Life in Japan



Life in Japan



Are the two on the left Eva (Syd's sister) and husband Bill Cranch?



Life in Japan



Life in Japan



Frank Bruce wearing school sweater



Life in Japan



Life in Japan

Tokyo.

1/17/24.

Darling

I don't know what to make of things - as I expected I have been asked to take over my old dept. but even that does not seem a certainty. Genl. & Carew are making a move at last & about one third of the staff are to go! What the result will be I have no idea.

Thanks for cable this morning which I passed on to Ni at Yokko. They were married on Saturday by Bishop McKim - It was, of necessity a very quiet wedding & only Genl. Carew & Callie besides the Bishop's wife & myself were present. Owing to the Bishop's engagements during the day the ceremony has to take place at 8 o'clock in the morning & the necessary registration at the Consul's afterwards.

Ni looked very nice in her dress & altho' appearing to feel the strain of it all, was very well & happy. The honeymoon is to be spent at Yokko where they will

Life in Japan



Frank Bruce



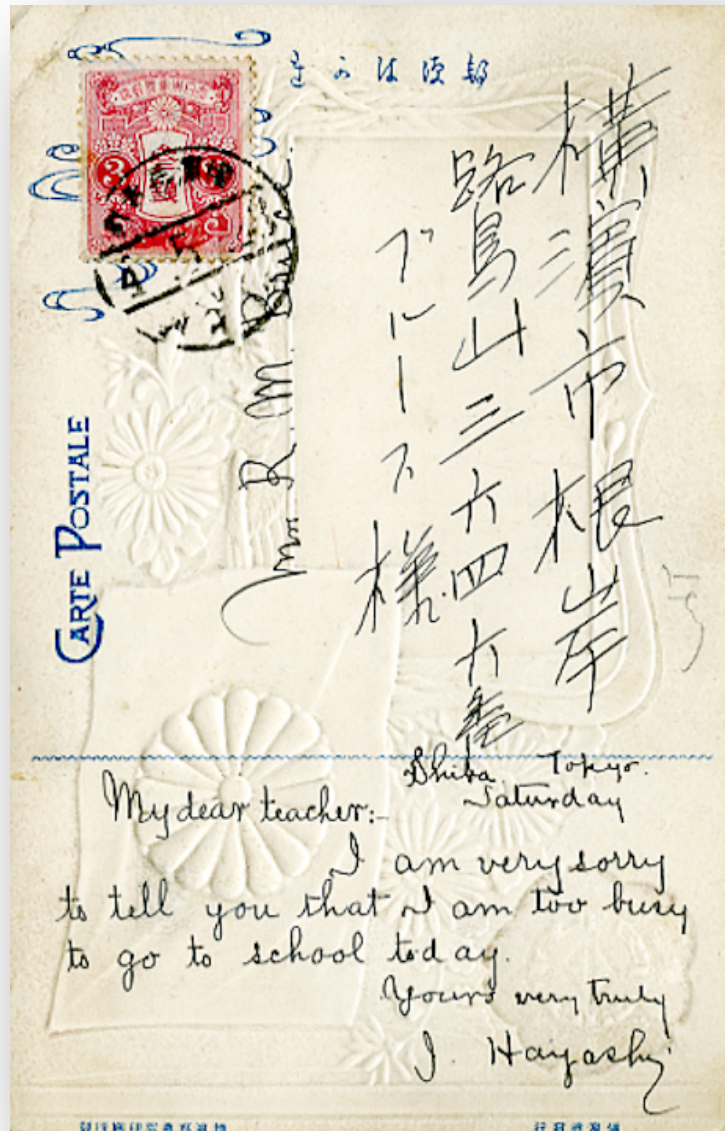
Life in Japan



Life in Japan



Life in Japan



Life in Japan



Life in Japan



Life in Japan



Life in Japan



Life in Japan



Life in Japan



Frank (centre). Chum on left schooled with Frank in England



Life in Japan



Vi Bruce



Life in Japan

Union Postale Universelle
CARTE POSTALE

Friday

Nov 12 1911

Dear Frank

Very glad to have your
card. so you went to a muffin
scramble eh? hope you didnt eat too
much - & hope you were polite & took
the first piece of cake in front of you -
always do this! - but see that the piece
in front of ^{you} is the biggest!!!

With love hoping you ~~will~~ soon recovered
from the bad attack of indigestion you must have had
afterwards
your loving Daddy

Life in Japan



Life in Japan



Life in Japan



Frank Bruce making a point?



Life in Japan



Life in Japan



Life in Japan



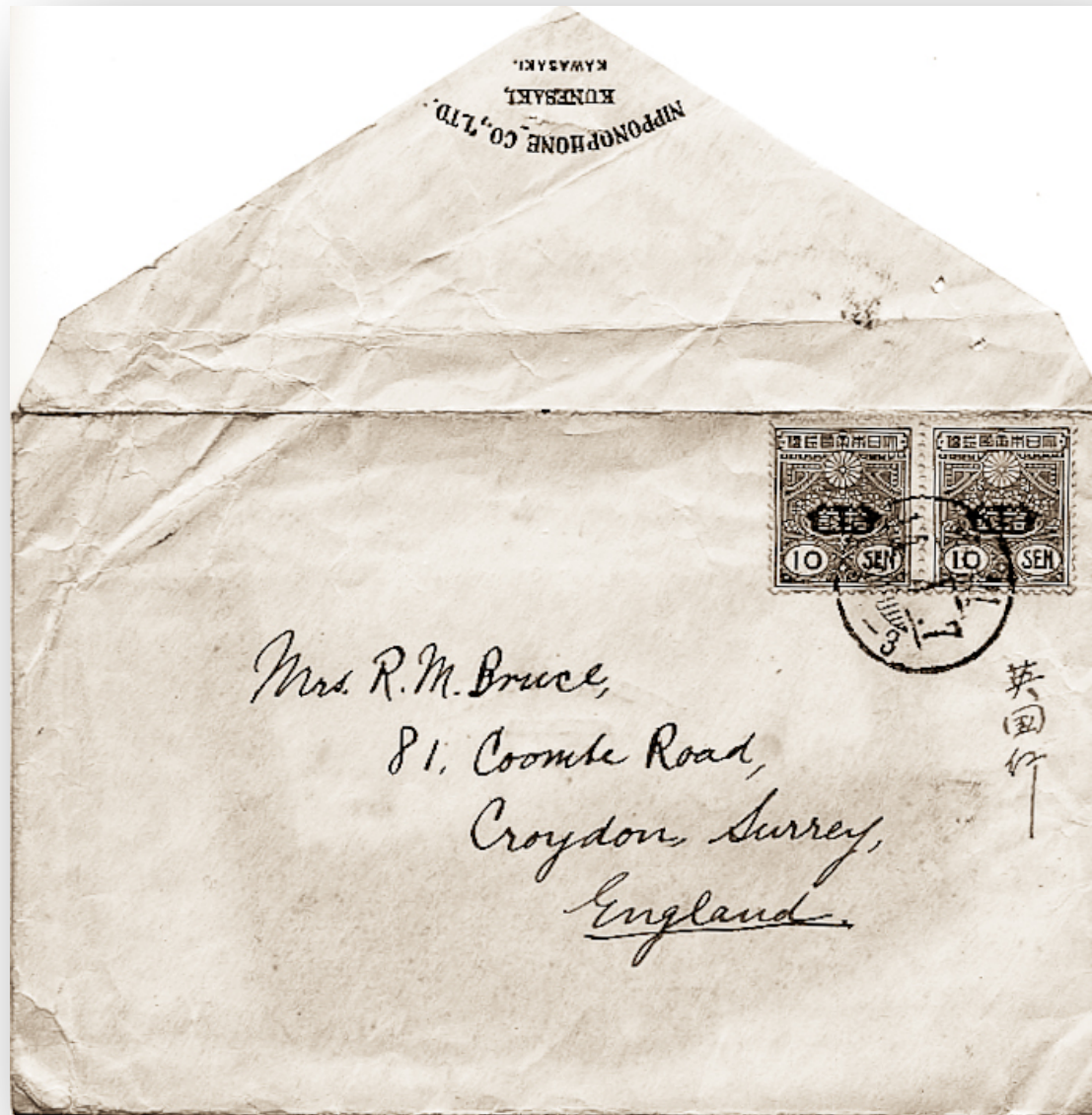
Life in Japan



Life in Japan



The village below 203 Bluff Rd (barely visible on the bluff)



mail and telegraph, the only means of communicating



Life in Japan



Life in Japan



Life in Japan



Vi Bruce with her brothers Maurice (L) and Geoffrey (R)



Neb Carruthers, husband of Irene Bruce Carruthers



Life in Japan



Life in Japan



火噴大島櫻ルタ見リヨ山城

Kagoshima Island



Otentosama Masonic Lodge, Yokohama, Sydney Bruce, centre rear



Life in Japan



Frank Bruce



Violet Bruce



New years eve?



Sydney Bruce at work at Sale and Frazar, Yokohama

Yokohama Lodge, No. 1092, F.C.

Founded 26th June, 1866

The Worshipful Master, Wardens, and Members of the Yokohama Lodge, No. 1092, F.C., request the pleasure of your presence at the Masonic Temple, No. 61, Yamashitacho, Yokohama, on Tuesday, the 17th February, 1920, at 6 p.m. on the occasion of the Installation of Brother Edwin Baikie Simpson-Baikie, as Worshipful Master, and the Investiture of Officers for the ensuing year; and at the subsequent Dinner.

R. S. M. P.

7th February, 1920

to A. R. Catto, P.M.,

Secretary.

No. 234, Yamate-cho, Yokohama

To Wor. Bro S. Bruce

Life in Japan

1920

PRINCIPALS AND OFFICERS

M.E. Comp. S. E. UNITE Z.
" " J. THOMPSON H.
" " F. T. HARTMAN J.
" " H. A. SCOTT Scribe E.
M. " " H. J. TAYLOR " N.
M. " " A. W. McLEAN Treasurer.
" " R. J. WILKINSON Principal Sojourner.
" " W. J. CABELDU 1st Ast. "
" " W. J. HAM ... 2nd " "
" " J. S. WALKER Steward.
" " E. I. BUNTING "
" " A. SWANSON Janitor.

2245. U7

8554



O TENTOSAMA CHAPTER

H. R. A.

No. 1263, E.C.

INSTALLATION

Tuesday, 16th March, 1920.

Dinner at the Oriental Palace Hotel
Yokohama.

Life in Japan

DINNER.

CONSOMME VERMICELLE

FILET DE MULET MAITRE D'HOTEL

GRENADINS DE VEAU SAUTE MADERE

JAMBON FROID A LA JELLE

CELERY & SPINACH

POTATOES

POULET DE GRAINS ROTIS

SALADE

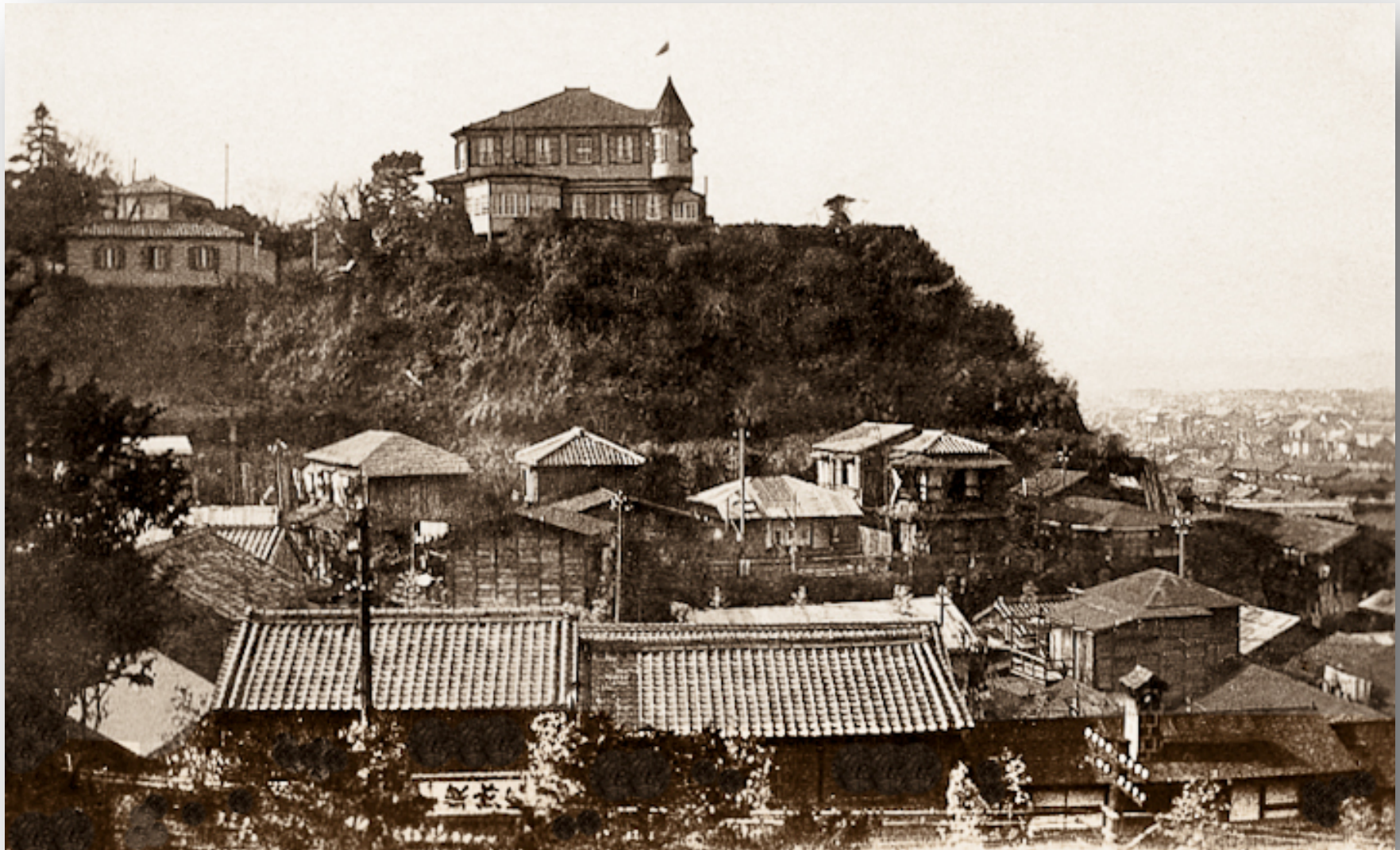
MOKA ICE CREAM

GATEUX

FRUITS

CAFE

Life in Japan



203 Bluff Rd, Yokohama on the bluff; destroyed in earthquake



Life in Japan



203 Bluff Rd



203 Bluff Rd, the Bruce residence in Yokohama



Life in Japan



Life in Japan



Life in Japan



Frank sporting school sweater, about 1917



Frank with his father Sydney Bruce



Frank Bruce



Sydney Bruce

M^{rs} Sydney Bruce.

Life in Japan



Life in Japan



Hamming for the camera. Frank Bruce on clarinet



Life in Japan

[Faint, mostly illegible handwritten text, likely bleed-through from the reverse side of the page.]

Tokyo
Tuesday 29. 8. 11

My own darling Sweetheart,
The mail has just been delivered, but nothing from you I was just a little disappointed altho I could not expect one so soon after your long letter I had 3 days ago. I am longing to hear though that you have got over your fit of the dumps but I'm afraid that you won't be cured until you have the

Life in Japan



Frank Bruce



Greek tragedy (L) and Greek comedy (R)



Life in Japan



Life in Japan



Life in Japan



Life in Japan



Life in Japan



Frank Bruce with his trusty motorcycle



Life in Japan



Life in Japan



Life in Japan



Life in Japan



Life in Japan



Life in Japan



Life in Japan



Frank (left) and friend in front of 203 Bluff Rd



Life in Japan



General view of Kowakidani, Hakone

箱根小涌谷全景

Life in Japan



Life in Japan



Hakone Meisho



ルテホ屋士富下之宮根箱

Life in Japan



The servants at 203 Bluff Rd, Yokohama



View of Snow Higashi-Park Fukuoka.

景の雪園公東(市岡福)

Life in Japan



Life in Japan



Life in Japan



(ku251) (可計等安)

Big Torri of Matsubara, Aki.

望遠居鳥大リ 三原松鳥巖藝安

Life in Japan



The Temple, Nigatsudo in Todaiji, Nara
堂月二寺大東良奈

N-18

Life in Japan



Life in Japan



Life in Japan

長崎縣佐世保市西大久保町七

長崎縣

佐世保市西大久保町七

佐久間 郎 敬

三艦隊 秋津

奥山 熊次



Vertical text at the bottom, possibly a return address or additional postmark information.

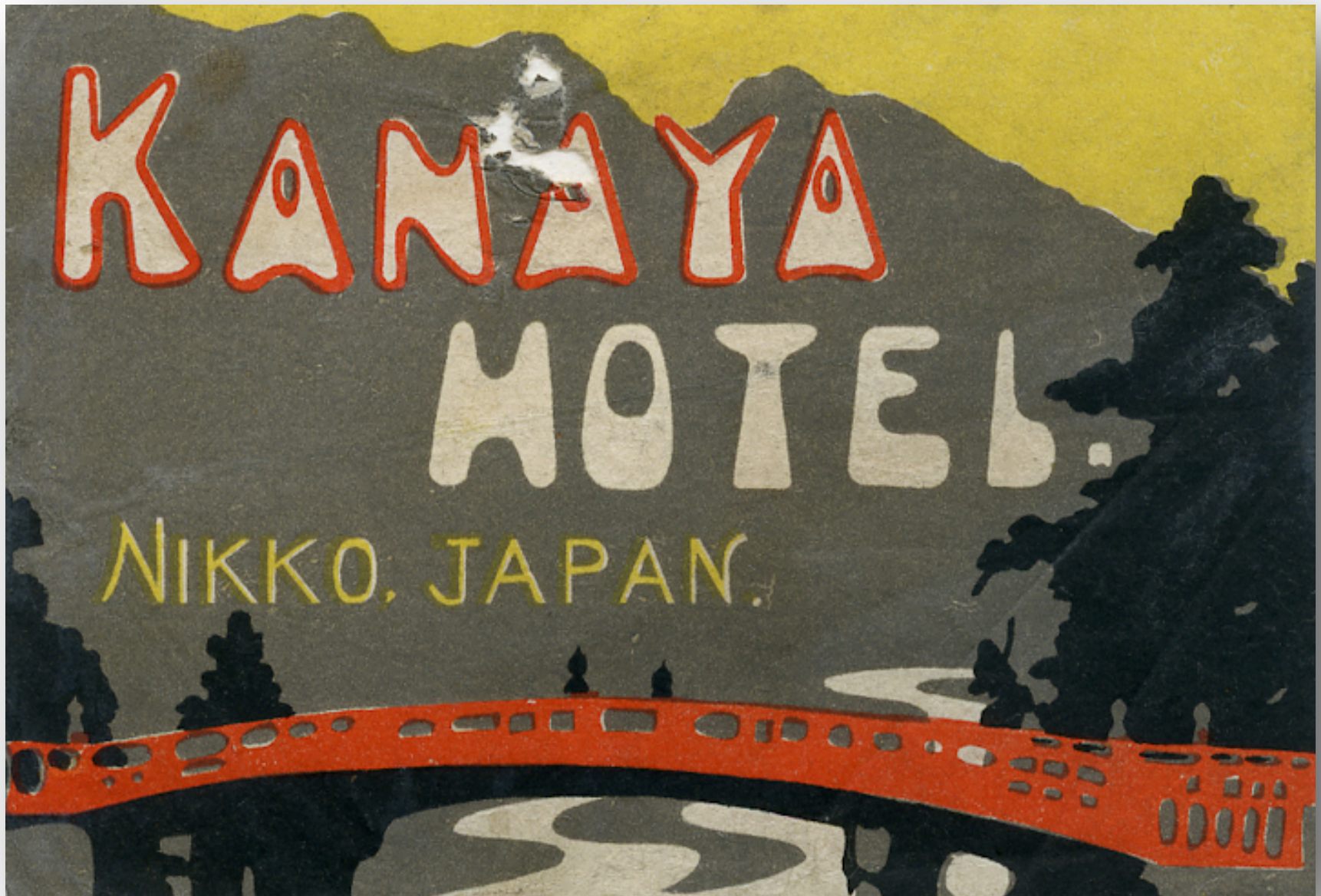
Vertical handwritten text on the right side, likely a message or a collection of notes.



Life in Japan



Life in Japan



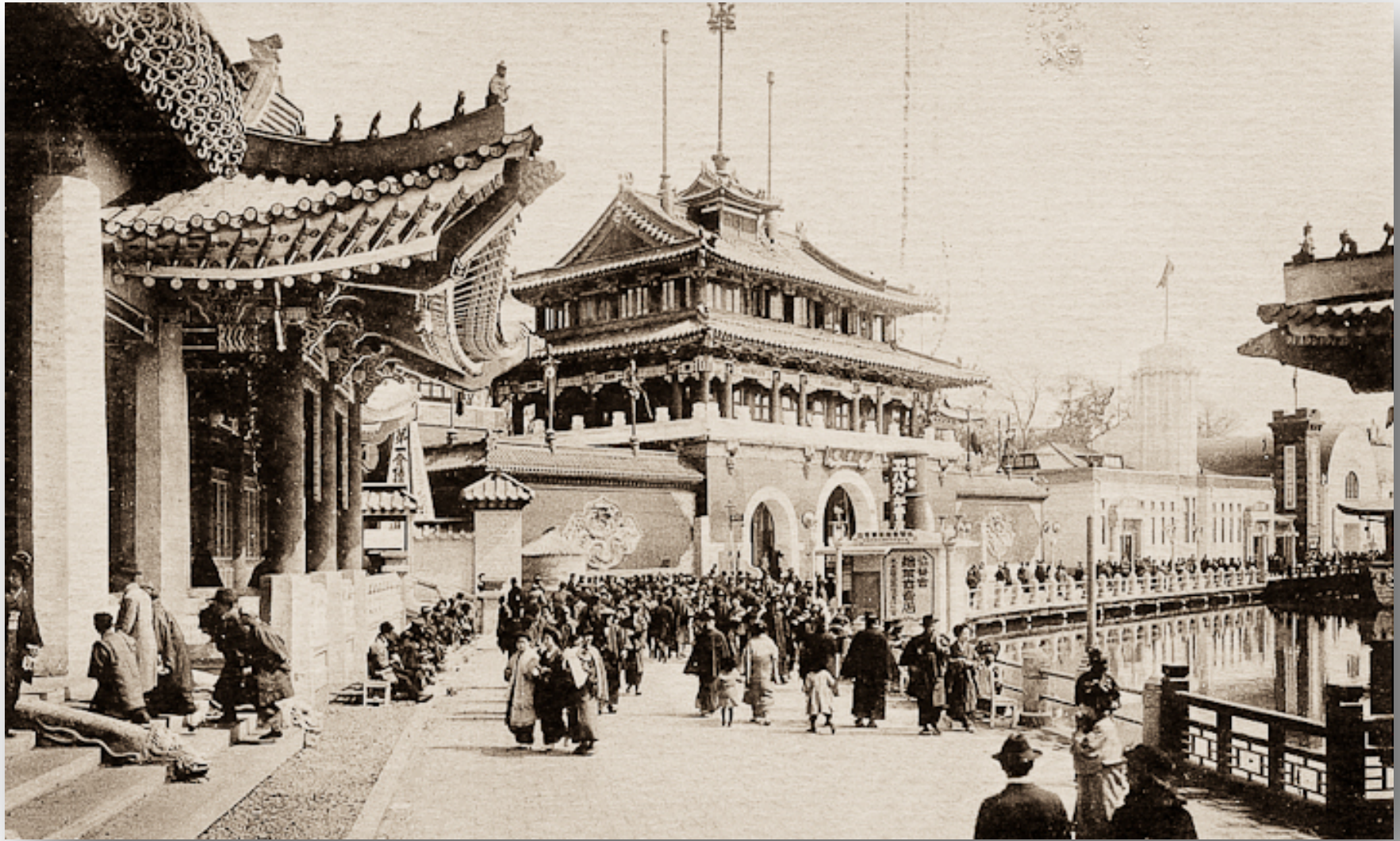
Life in Japan



Tokyo Peace Exhibition, 1922



Tokyo Peace Exhibition, 1922



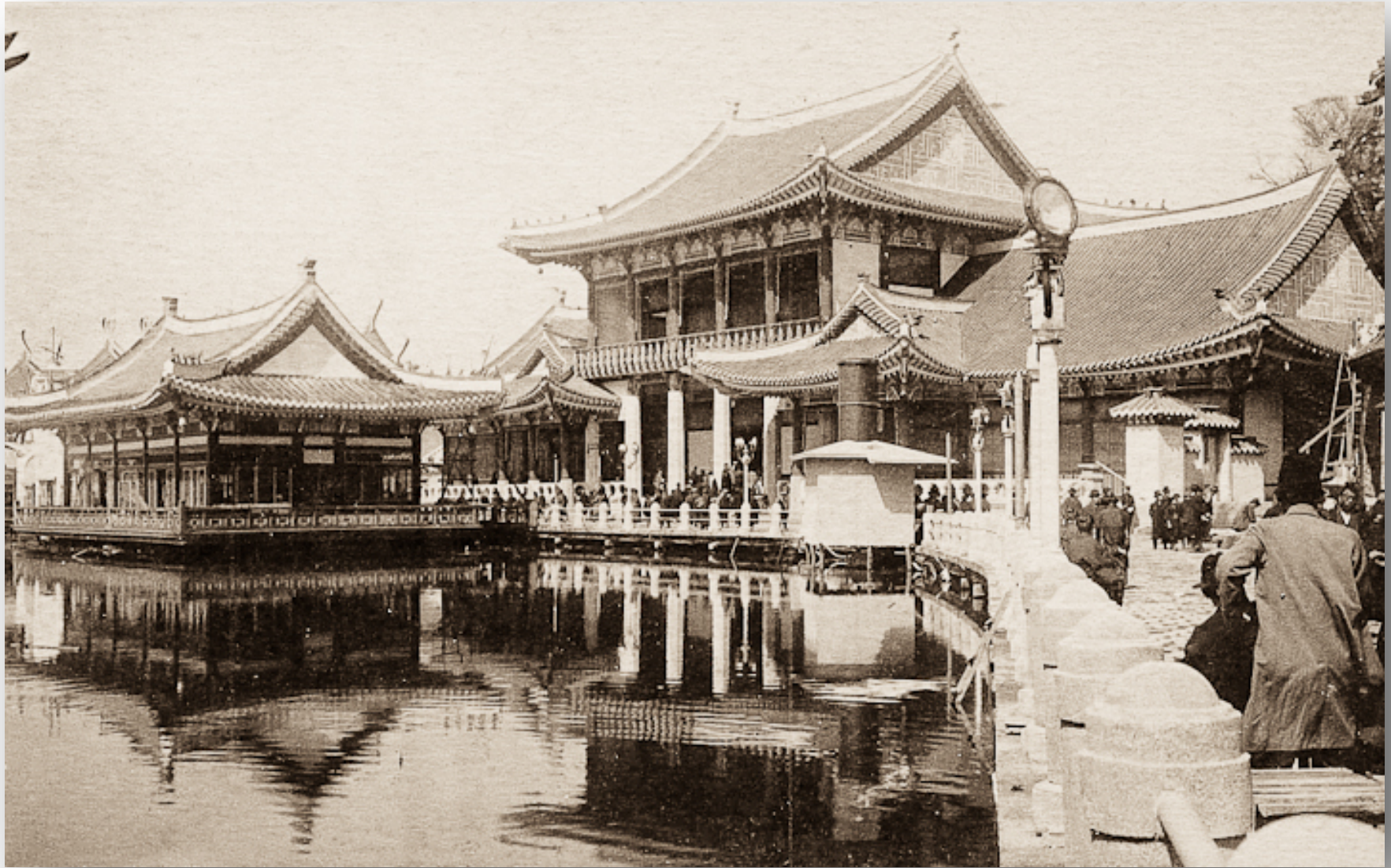
Tokyo Peace Exhibition, 1922



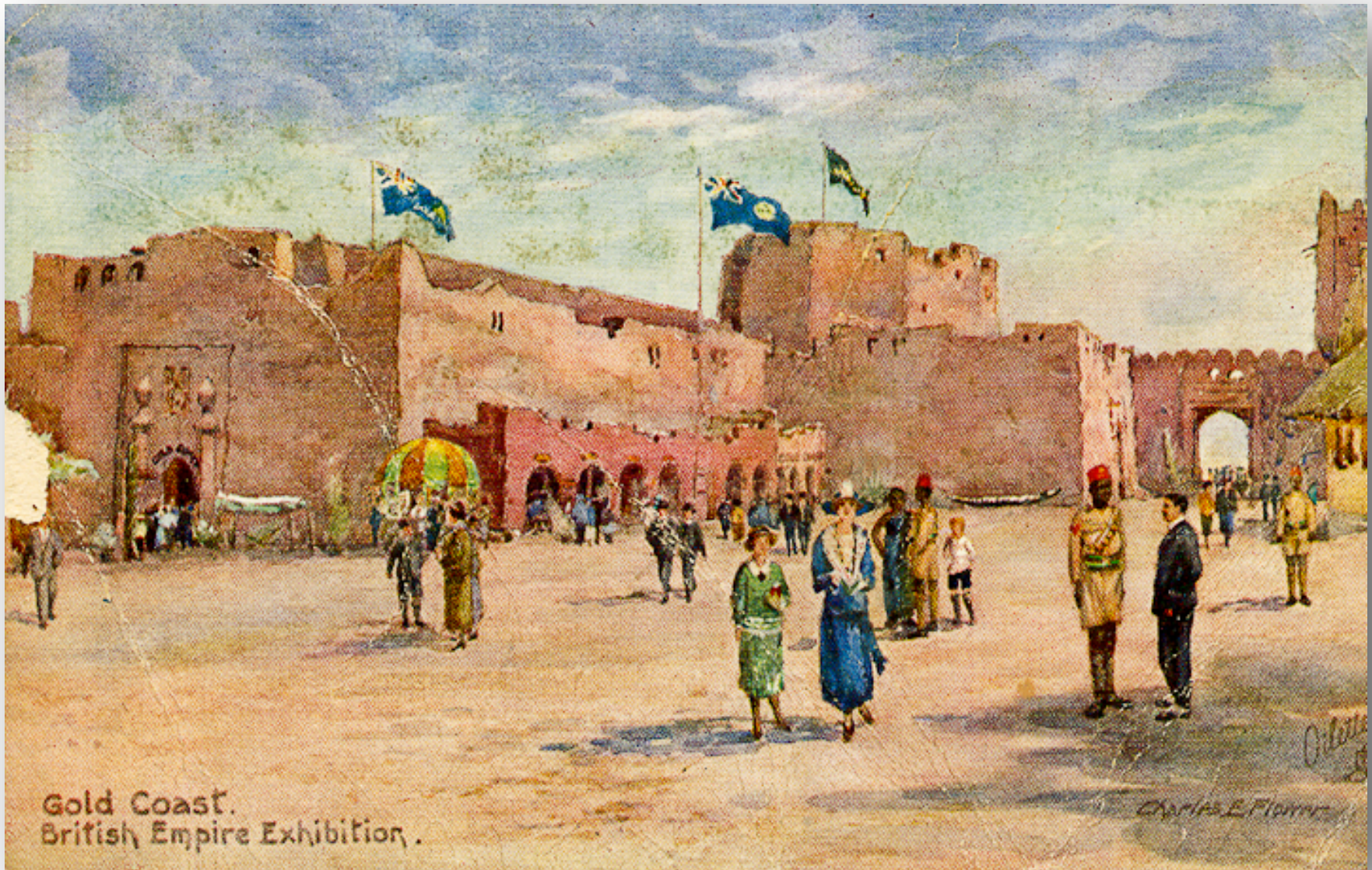
Tokyo Peace Exhibition, 1922



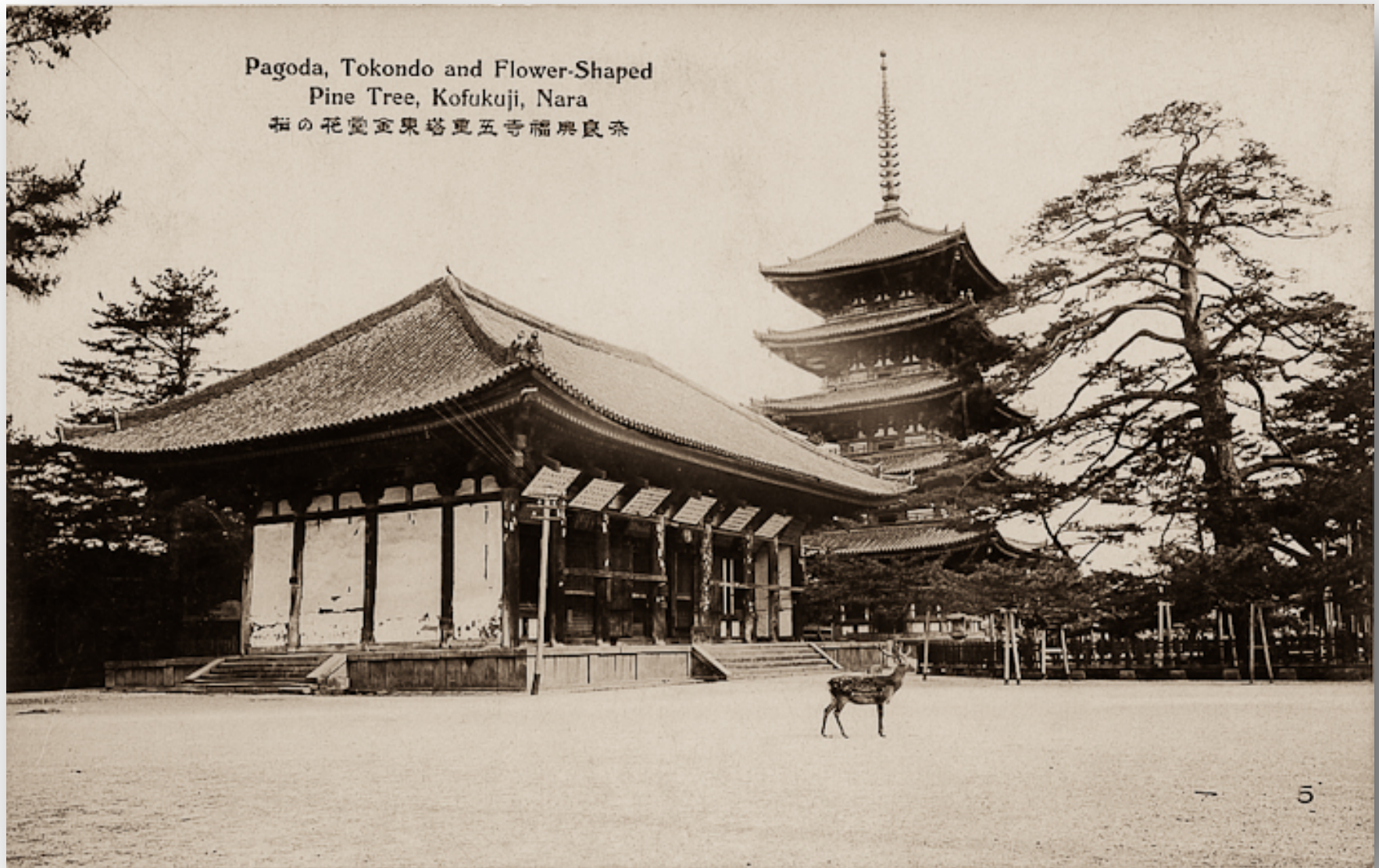
Tokyo Peace Exhibition, 1922



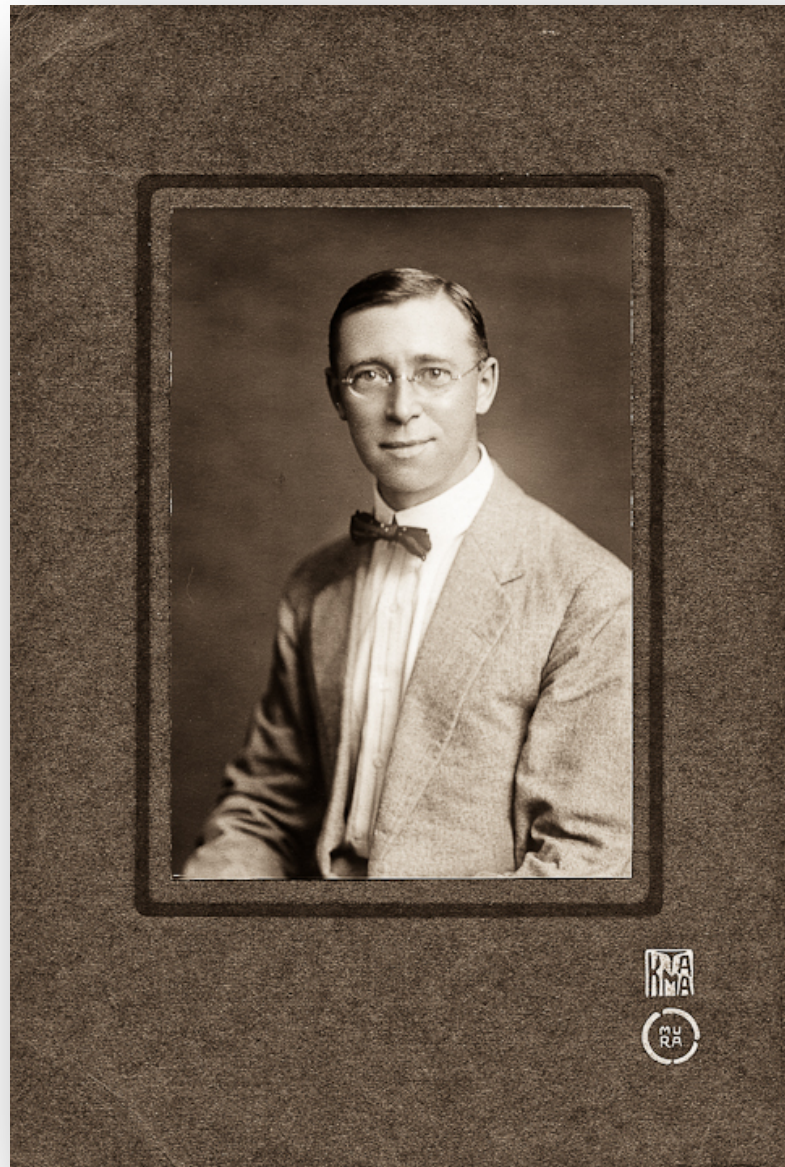
Tokyo Peace Exhibition, 1922



British Empire Exhibition, Wembley, London, 1924



Life in Japan



Life in Japan



Frank and Sydney



Rose Mary Caldwell Bruce



Life in Japan



Frank and Sydney



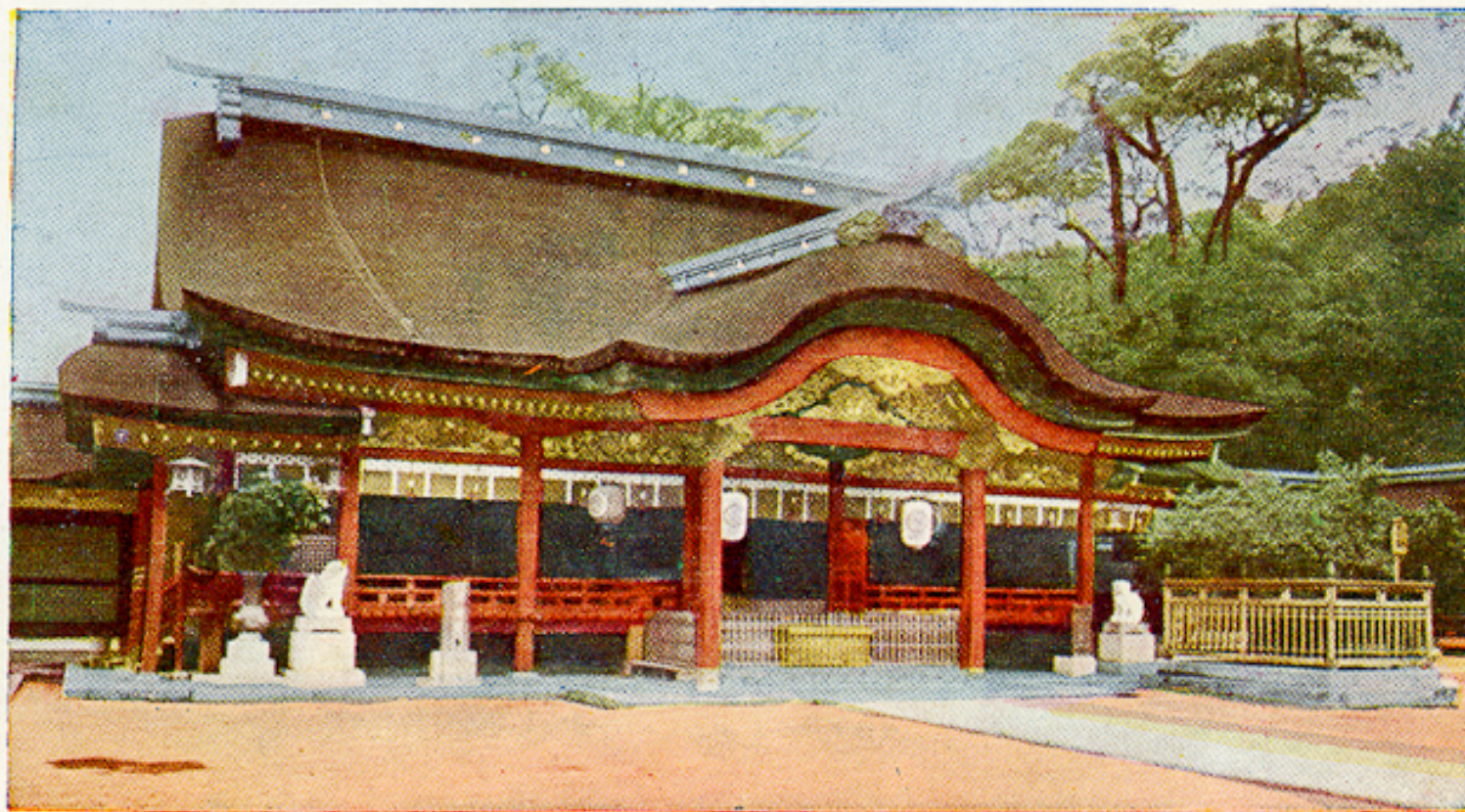
Life in Japan



Life in Japan



Life in Japan



殿本社神府宰太
The Dazaifu shrine.

Dazaifu Shrine



Life in Japan



Life in Japan



Sydney, back row; Frank on drums

A New Earth Media Production

peter@newearthvillage.com

Copyright: Peter Bruce 2013